

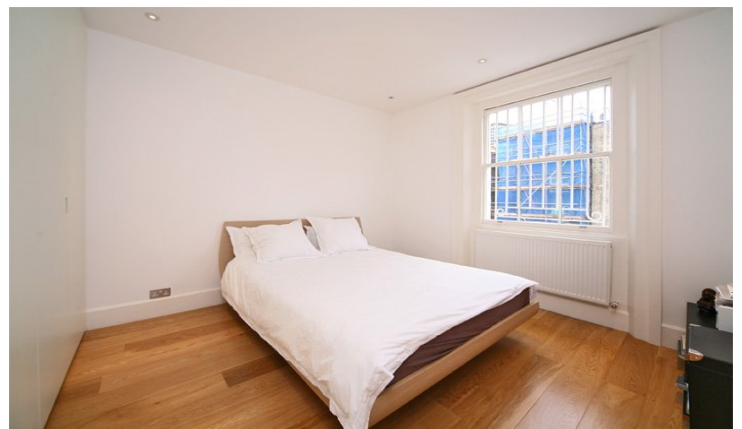
# Cornwall Gardens SW7

£950,000  
Leasehold

South Kensington & Chelsea  
Sales

144 Old Brompton Road  
London  
SW7 4NR  
Telephone  
020 7373 8883  
Facsimile  
020 7373 8600

Email  
sken.sales@chard.co.uk



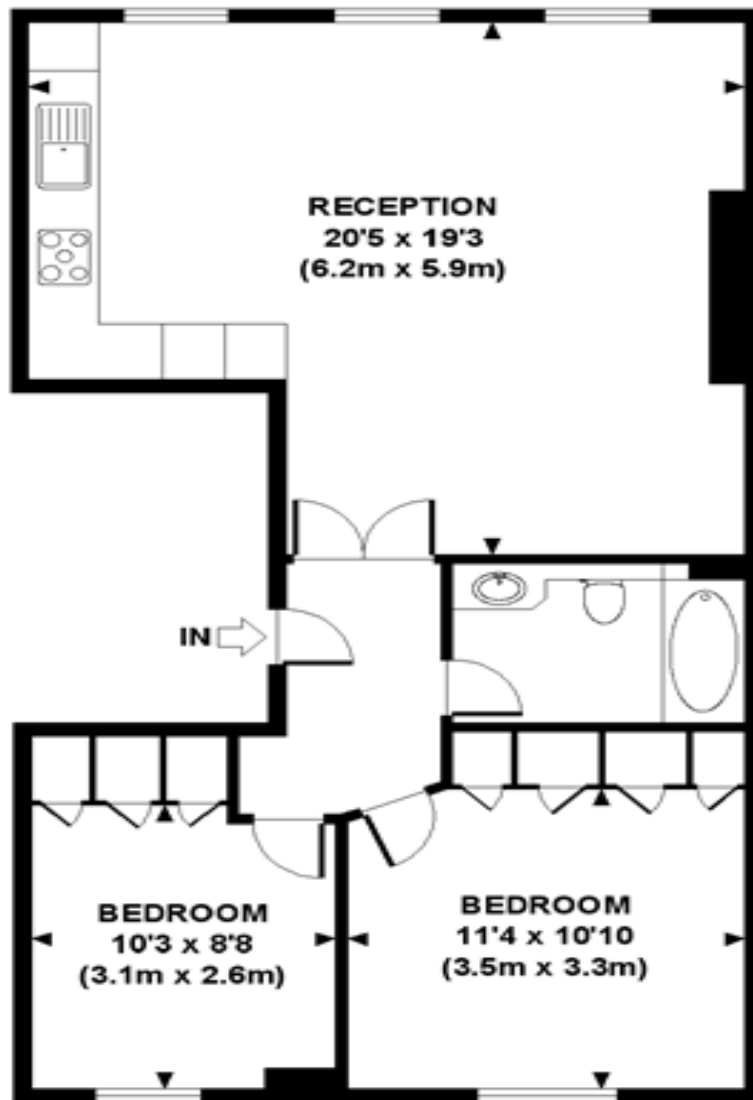
Two double bedroom  
refurbished flat overlooking  
a garden square for sale in  
South Kensington



Cornwall Gardens is Close to Gloucester Road and Kensington High Street with a wide choice of cafes, shops and restaurants including the Waitrose supermarket, Boots chemist, prêt coffee shop, Black & Blue steak house and Whole Foods. Gloucester Road is the closest underground with links to the city via the District and Piccadilly line.

## CORNWALL GARDENS, SW7

Approx. gross internal area  
692 Sq.Ft. / 64 Sq.M.



THIRD FLOOR

### FLOOR PLAN

Whilst every attempt has been made to ensure the accuracy of the floor plans contained here, measurements of doors, windows and rooms are approximate and no responsibility is taken for any error, omission or mis-statement. These plans are for representation purposes only as defined by RICS Code of Measuring Practice and should be used as such by any prospective purchaser. The services, systems and appliances listed in this specification have not been tested by Chard and no guarantee as to their operating ability or efficiency can be given.



Property Misdescriptions Act (1991)

These particulars are for general guidance only. They do not form or constitute any part of an offer or contract. Chard has not carried out a structural survey of the property. The services, appliances or specific fittings mentioned in these details have not been tested. Every attempt is made to ensure accuracy, however all photographs, measurements, floorplans and distances are for illustrative purposes only. They must not be relied upon when purchasing carpets and or other fixtures and fittings. Lease details, service charges and ground rents are given as a guide only. They should be checked and confirmed by a licensed conveyancer prior to exchange of contracts. The copyright of all details, photographs and floorplans remain exclusive to chard.