

Palace Gardens Terrace W8

£610,000
Leasehold

Notting Hill & Kensington

123 Notting Hill Gate
London
W11 3LB
Telephone
020 7243 4500
Facsimile
020 7243 4802

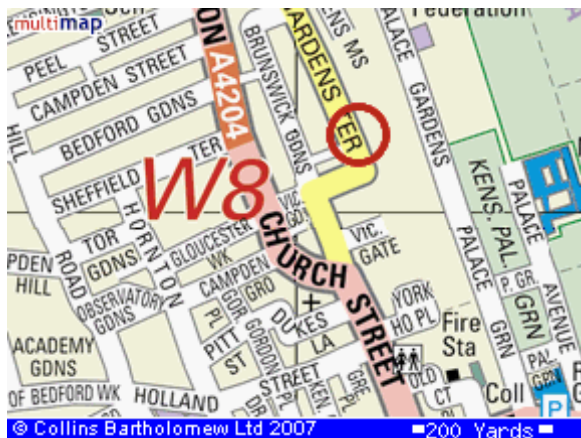
Email
nottinghill.sales@chard.co.uk



One double Bedroom Flat
for sale of Kensington High
Street

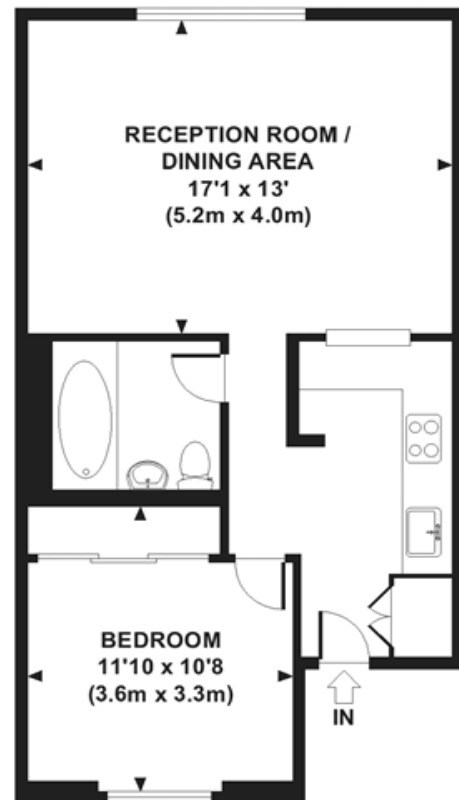
Living room with space for dining
Second floor of conversion
Bedroom views over Kensington Palace Gardens
Modern kitchen
Tree lined residential street
Notting Hill Gate Underground

Tenure: Leasehold
 Lease length: 125 years from 21/06/1982 (96 years remaining)
 Service charge: TBC
 Ground rent: TBC
 Floor area: 511 Sq Ft (48 Sq M)
 Local authority: RBKC



PALACE GARDENS TERRACE, W8

Approx. gross internal area
 511 Sq.Ft. / 48 Sq.M.



SECOND FLOOR

FLOOR PLAN

Whilst every attempt has been made to ensure the accuracy of the floor plans contained here, measurements of doors, windows and rooms are approximate and no responsibility is taken for any error, omission or mis-statement. These plans are for representation purposes only as defined by RICS Code of Measuring Practice and should be used as such by any prospective purchaser. The services, systems and appliances listed in this specification have not been tested by Chard and no guarantee as to their operating ability or efficiency can be given.



Location

Property Misdescriptions Act (1991)

These particulars are for general guidance only. They do not form or constitute any part of an offer or contract. Chard has not carried out a structural survey of the property. The services, appliances or specific fittings mentioned in these details have not been tested. Every attempt is made to ensure accuracy, however all photographs, measurements, floorplans and distances are for illustrative purposes only. They must not be relied upon when purchasing carpets and or other fixtures and fittings. Lease details, service charges and ground rents are given as a guide only. They should be checked and confirmed by a licensed conveyancer prior to exchange of contracts. The copyright of all details, photographs and floorplans remain exclusive to chard.